

The SALUS Basic Gateway (model SG888ZB) is a user-friendly, easy-to-install device that connects your suite of equipment to the wyse.ly platform.

After you have installed and connected your Gateway to the internet, there are four simple steps to pair your device to wyse.ly:

Step 1: Download the wyse.ly mobile app from Google Play or the App Store

Step 2: Create a wyse.ly account

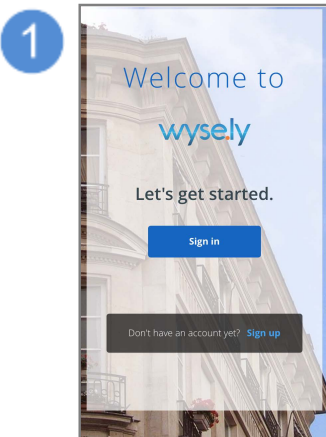
Step 3: Connect your Gateway to wyse.ly

Step 4: Connect your devices to wyse.ly

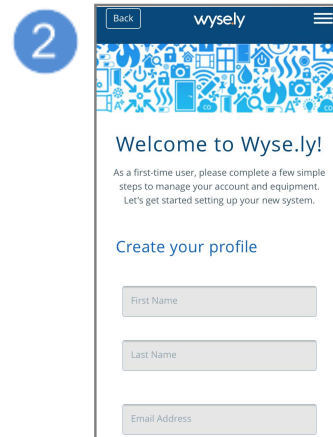
STEP 1 – Download the wyse.ly mobile app from Google Play or the App Store



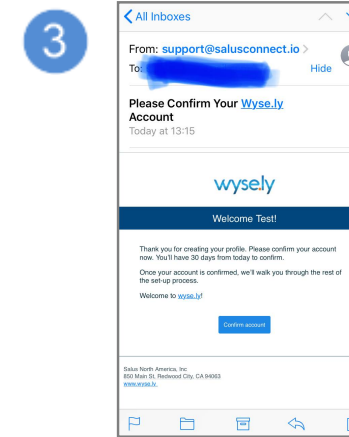
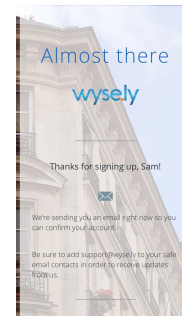
STEP 2 – Create a wyse.ly account



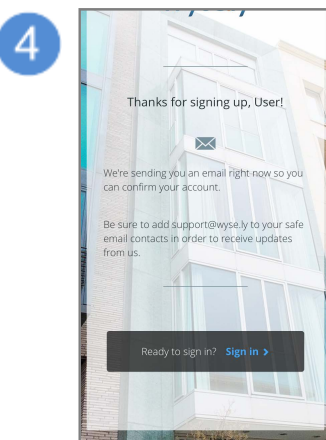
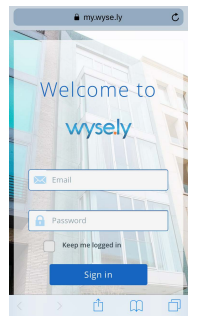
Open the app and tap on **Sign up** to create an account.



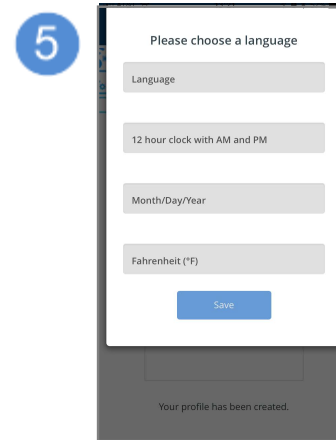
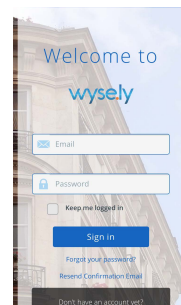
Complete the form to create your account. wyse.ly will send a confirmation email to your email address.



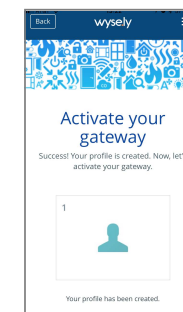
Click on the button in the email sent to your email address to confirm the account. It will take you to a web login page, but **ignore** that for now.



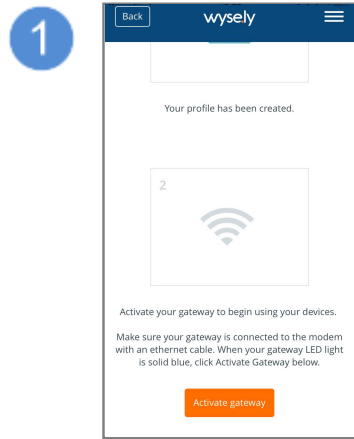
Go to the app and at the bottom of the "Almost there" screen, click on **Sign In** to take you to the Sign In page. Sign in with your account info.



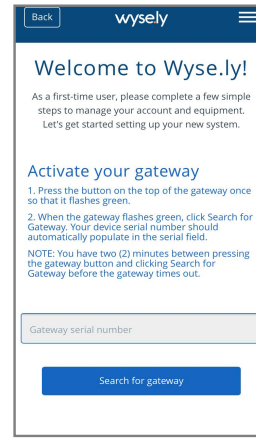
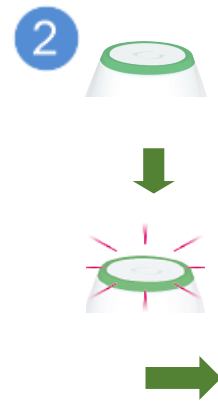
After you sign in, complete the form to finish setting up your account.



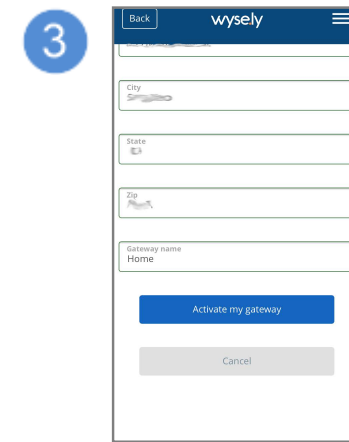
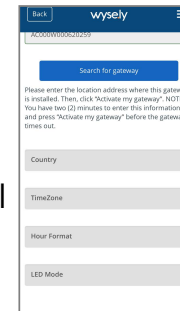
STEP 3 – Connect your Gateway to wyse.ly



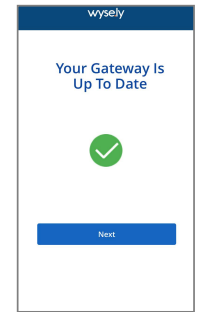
Scroll down the Success screen to the gateway section and tap on **Activate Gateway**



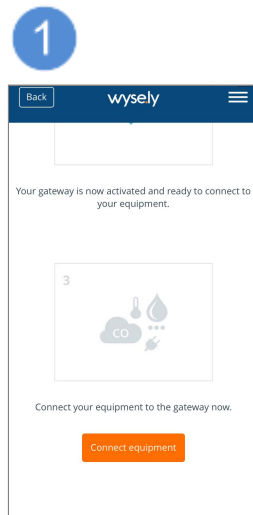
Press once on the top of your gateway. When it flashes green, tap on **Search for gateway**. The gateway serial number will fill in when the gateway is found.



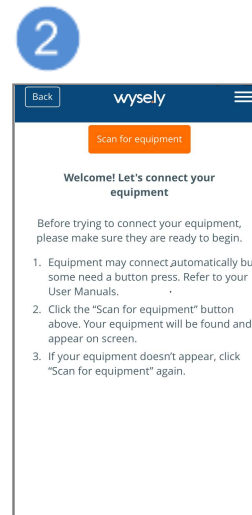
When the gateway is found, complete the form and tap **Activate my gateway** to finish setting up the gateway.



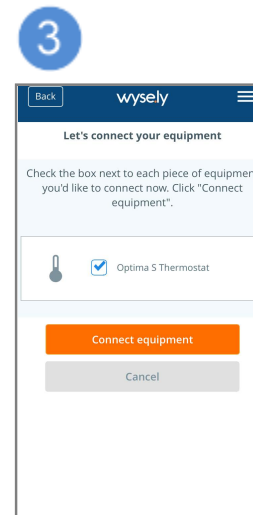
STEP 4 – Connect your devices to wyse.ly



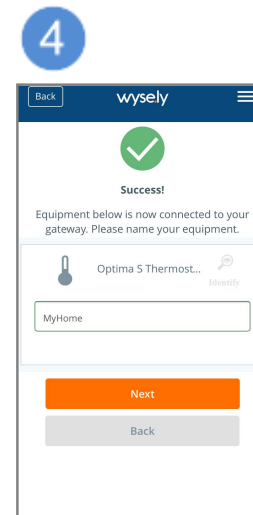
After activating the gateway, scroll down to the equipment section and tap on **Connect Equipment**



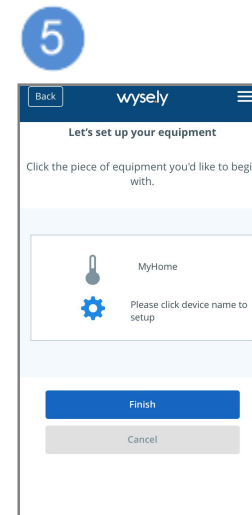
Place the devices to be added to wyse.ly in pairing mode and tap **Scan for equipment**. The gateway will flash red and start looking for devices.



When the device(s) are found, select the ones to be added and tap **Connect equipment**.



After connection, give the device(s) unique name(s) and tap **Next**.



Depending on the device, further setup may be required. When done, tap **Finish** to wrap up and take you to the dashboard.

