

Installation Instructions

InnoFlue Vent Systems

Installation guide for:
ICTCR02 Concentric Reversible Adaptor



Centrotherm

Convert from **InnoFlue® 2"/4" Concentric** to **InnoFlue® 4" Single Wall** or **InnoFlue® 4" Single Wall to InnoFlue® 2"/4" Concentric** with the **InnoFlue® Twin Pipe / Concentric Reversible Adaptor (ICTCR02)**

ICTCR02 Installation Instructions

Twin Pipe
to
Concentric

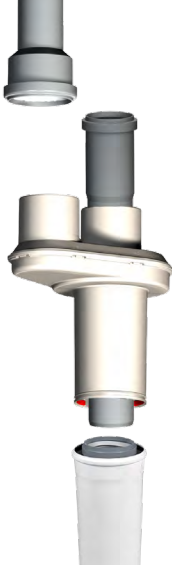


Note: Use Centrocerin® lubricant at each connecting point

Twin Pipe To Concentric Configuration

1. Assure air-intake and exhaust are securely attached to adaptor
2. Secure **InnoFlue®** Concentric vent (ICVL) to adaptor
3. Complete flue gas run with **InnoFlue®** Concentric components and termination

Concentric
to
Twin Pipe



Concentric to Twin Pipe Configuration

1. Assure **InnoFlue®** Concentric vent (ICVL) is securely attached to adaptor
2. Connect **InnoFlue®** single wall vents (ISVL) to Concentric adaptor
3. Complete flue gas run with **InnoFlue®** Single Wall components and termination

ICTCR02
 Concentric Reversible
 Appliance Adaptor
 Installation Instructions
 2018.02.22 | Rev 1

Centrotherm
 400 South Pearl St.
 Albany, NY 12202
 Tel: 518.434.3400
 Fax: 518.618.3166
 info@centrotherm.us.com
 www.centrotherm.us.com